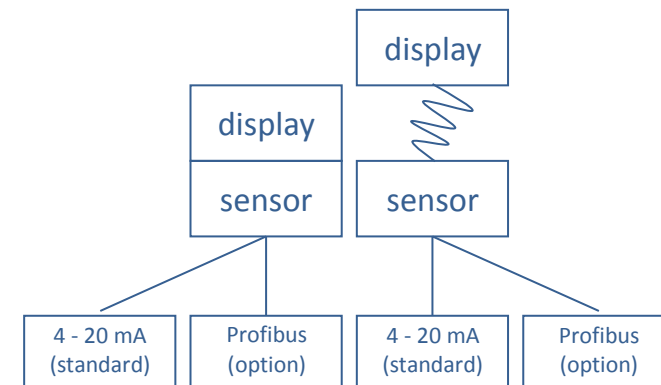
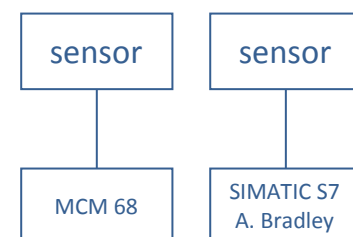


SENSOR CONTROL OPTIONS

Transmitter Version with local display and keypad available as stand-alone compact unit or with a 10 m display extension cable:



Sensor without local display and keypad:



Innovation. Dedication. Centec.

Germany
Centec GmbH
Wilhelm-Röntgen-Strasse 10
63477 Maintal
Tel.: +49 6181 18 78 0
Fax: +49 6181 18 78 50
info@centec.de

Czech Republic
Centec automatika s.r.o.
Pekařská 8/601
155 00 Praha 5
Tel.: +420 257 084 111
Fax: +420 235 518 701
prodej@centec.cz

USA
Centec LLC
P. O. Box 820
Germantown, WI 53022-0820
Tel.: +1 262 251 8209
Fax: +1 262 251 8376
info@centec-usa.com

UK
Centec UK
Stalworths, The Street
Great Tey, Colchester, Essex, CO6 1JS
Tel.: +44 1206 21 19 21
Fax: +44 1206 21 19 16
info@centec-uk.com

Serbia
Centec Serbia
Bogdana Žerajića 34/III
11000 Beograd
Tel.: + 381 11 358 11 24
Fax: + 381 11 358 11 24
info@centec.rs

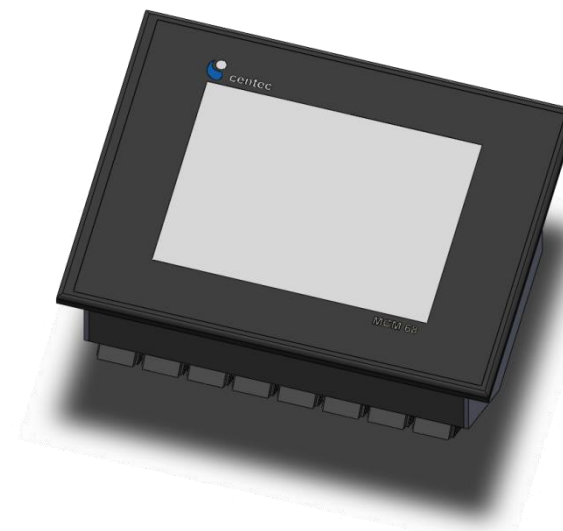
India
Centec RRR Systems & Sensors Pvt Ltd
RRR House, Plot 80, Sector 23
Turbhe Naka, Navi Mumbai - 400 705
Tel.: +91 22 2783 3655 & 2783 1348
Fax: +91 22 2783 4814
mail@centecrrr.com

Brazil
Centec América Latina Ltda
Rua Mexico 148 conj. 1004 Centro
20031 142 Rio de Janeiro
Tel.: +55 21 2223 2066
centeclatina@terra.com.br

MCM 68

**Modular
Concentration
Monitor**

Centec Process Sensors

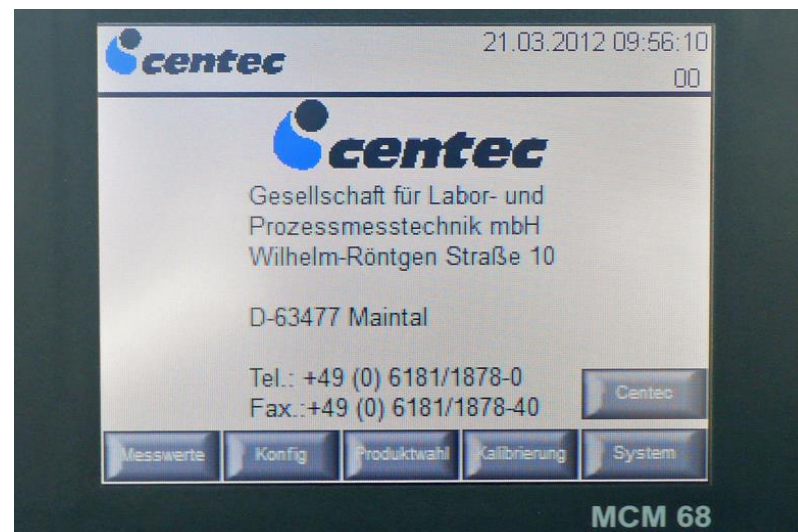


Automated
process skids
and high precision
sensors from a
single source.
Centec.

MCM 68

The Principle

MCM 68 is the latest version of a multi-functional transducer series developed and manufactured by Centec for decades. Applied in various industries all around the world, this innovative and modular device simultaneously monitors, evaluates and controls multiple types of sensors. The measurement values can be displayed locally or transmitted to a process control system (PLC) via a variety of I/O ports. MCM 68 software is compatible with Siemens SIMATIC S7. The Modular Concentration Monitor also connects with PCs and printers. For extended data communication, additional network interfaces such as Profibus PA and Ethernet are available on demand. MCM 68 has a user-friendly 5,7" QVGA touch screen HMI. It is not only a perfect tool in combination with any Centec sensor – it also combines perfectly with other instruments for measuring e.g. pH, colour, conductivity, turbidity or yeast cells.



MCM 68

- **Simultaneous Evaluation of the Output Signals of Various Sensors**
e.g. O₂, CO₂, Density, Sound Velocity, pH, Colour, Conductivity
- **Data is Locally Displayed or Transmitted to PLC System**
- **Software Compatible to Siemens SIMATIC S7**
- **User-Friendly 5,7" QVGA Touch Screen HMI**
- **Various Interfaces (RS 232/485, Profibus, Ethernet)**
- **Outstanding Price-Performance-Ratio**

Technical Data MCM 68

Main Memory	512 kByte SRAM
Flash	4,0 MByte (internal) & micro SD, max. 2 GByte
Temperature of Operation	- 20 - + 40 °C
HMI Display	5,7" QVGA, 320 x 240 pixel, TFT display 16 Bit colours
Input (modular expandable)	16 x digital (24 VDC) & 4 x analog (0 - 20 mA / + 0 / - 10 - + 10 V)
Output (modular expandable)	16 x digital (24 VDC) & 4 x analog (0 - 20 mA / + 0 / - 10 - + 10 V)
Interface	Profibus DP, COM1 RS232 & COM2 RS232/485; others on request (e.g. Profibus PA; Ethernet)
Enclosure Rating	IP65
Dimensions (W x H x D)	(182 x 140 x 95) mm
Weight	approx. 1,0 kg
Current Consumption	50 mA - 650 mA
Power Supply	24 VDC (11 V - 30 VDC); others on request